

# Slit Dispensing Position Chart

## Labels Wound Face Out

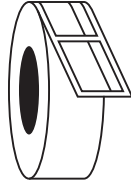
1. Slit to dispense first



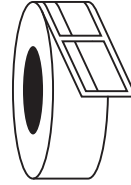
2. Slit to dispense last



3. Right side of slit to dispense first

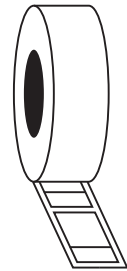


4. Left side of slit to dispense first

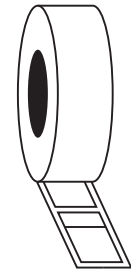


## Labels Wound Face In

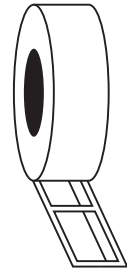
5. Slit to dispense first



6. Slit to dispense last



7. Right side of slit to dispense first



8. Left side of slit to dispense first

